



# STEEL STRUCTURES COMPANY IN ROMANIA

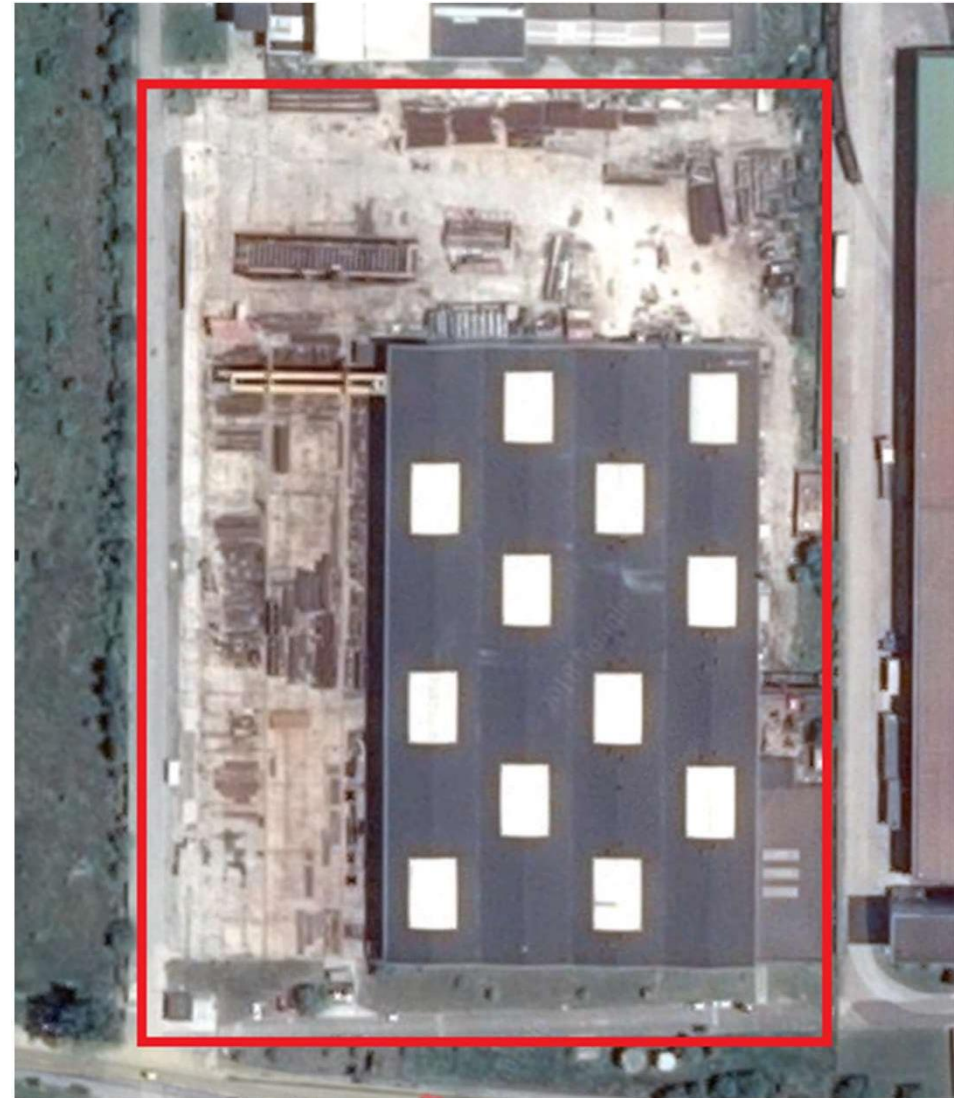
MAY 2023



# STEEL STRUCTURES COMPANY IN ROMANIA

## KEY FACTS

- Actively operating since 2005
- Proven track record in modeling, fabrication and erection of complex and heavy metallic structures, closely supporting customers with value engineering solutions
- Wide experience delivering projects all over Romania and internationally to Europe, America, Africa and Middle East.
- Area : 15.000m<sup>2</sup> factory surface (covered) in 50.000m<sup>2</sup> plot
- Capacity: 5.000 to 6.500 tonnes /year
- Part of a multinational group with wide experience in metallic structures among other areas





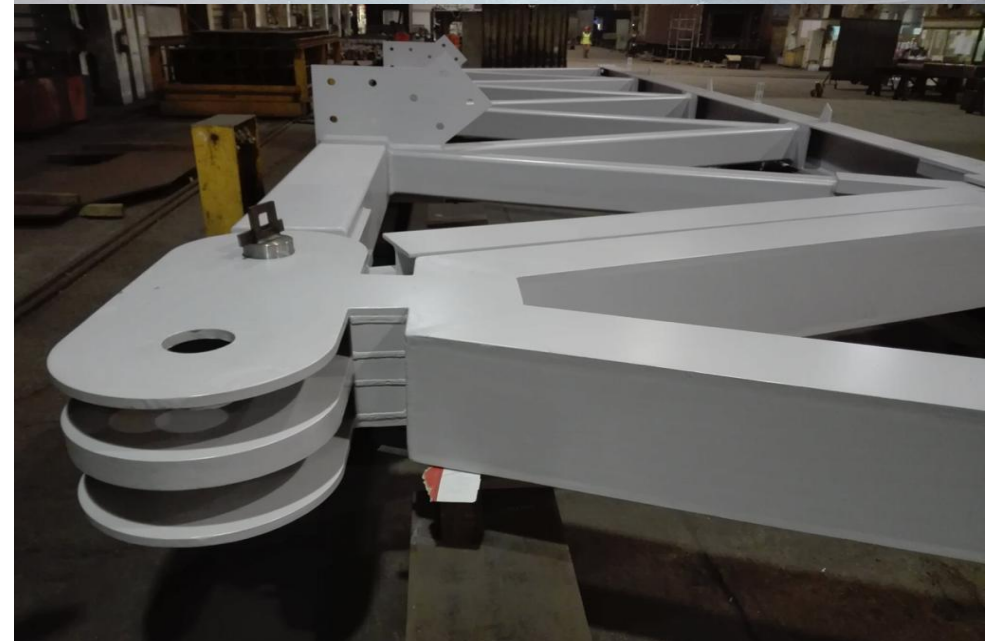
# STEEL STRUCTURES COMPANY IN ROMANIA

## STRENGTHS OF THE COMPANY

- Solid knowledge of the market and strong relations with the key players both in the local and abroad markets
- Good market reputation on execution of complex infrastructures, especially bridges
- Unique capacity to perform well on the most demanding and complex projects worldwide
- Close relations with regular clients, usually recurrent (main international contractors)

## MANAGEMENT STRUCTURE

- Lean management structure
- Management Team, reporting to the Board, with two persons transversally responsible for operations (including projects and factory) and finance/administrative (including all back-office departments).

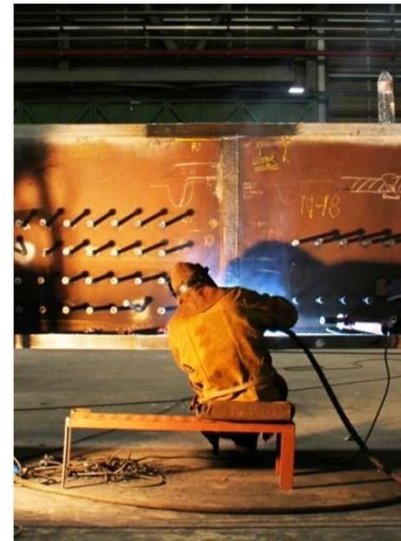


# STEEL STRUCTURES COMPANY IN ROMANIA

## HUMAN RESOURCES

**TOTAL: 107**

- Locksmiths: 26
- Welders: 21
- Cutting: 9
- Shotblasters: 4
- Painting: 3
- Expedition: 2
- Wareh/Maint. 7
- QSE 8





# STEEL STRUCTURES COMPANY IN ROMANIA

## MAIN EQUIPMENT & TECH STRUCTURE

### CUTTING EQUIPMENT - PLATES

- Oxygen / Plasma ESAB SXE-P3 6500 (1x)
- Oxygen ESABHANCOLK (1x)
- Drilling HARTFORD HV70A (1x)
- Drilling FICEP P803A (1x)
- Guillotine – ADIRA GHO1030 (1x)

### CUTTING EQUIPMENT - PROFILES

- Cutting and drilling KALTENBACH KDS 1015 (1x)
- Cut BOMAR TRANSVERSE 510330DGH (1x)
- Cut DANOBAT CPI70.50DI (1x)
- Radial drilling AJAX AJ 155 (1x)

### WELDING EQUIPMENT

- Submerge welding (2x)
- Multitrack ESAB LAF 1000 (2x)
- Stud Welding Gun NELSON NETWELD 6000 (1x)
- Welding equipments MIGMAG SAFA DIGISTEEL (12x)
- Welding equipments MIGMAG MILLER DIMENSION (2x)
- Welding equipments MIGMAG KEMPPII (20x)
- Welding equipments MIGMAG FRONIUS (11x)
- Plasma manual Hypertherm Powermax (1x)

### PAINTING EQUIPMENT

- Airless Sprayers GRACO / X 60 /220 CC (3x)
- Shot blasting equipments - AIR BLAST A.B.S.C. (3x)
- Shot blasting camera 24m x 6m x 6m (1x)

### LIFTING EQUIPMENT

- Overhead cranes (12x from 10T to 32 Tons)
- Electro Magnets (2x)

### TECHNOLOGICAL STRUCTURE

#### ➤ ERP » SAP R/3 modules:

- Human Resources (SAP HR)
- Production Planning (SAP PP)
- Material Management (SAP MM)
- Sales and Distribution (SAP SD)
- Project System (SAP PS)
- Financial Accounting and Controlling (SAP FICO)
- Plant Maintenance (SAP PM)
- Quality Management (SAP QM)

## CERTIFICATIONS

- Quality Management system, according to ISO 9001:2015 standard, attested by “TUV Rheinland Cert GmbH” with certification nr 01 100 1521238;
- Environment Management system according to ISO 14001:2015 standard, attested by “TUV Rheinland Cert GmbH” with certification nr 01 104 1521238;
- Safety Management System according to ISO 45001:2018 standard, attested by “TUV Rheinland Cert GmbH” with certification nr 01 213 1521238;
- Production Process – Factory and Welding – certification according to EN 1090 attested by “TUV Rheinland Cert GmbH” » Execution Class 4 (EXC 4)





# STEEL STRUCTURES COMPANY IN ROMANIA

## PRODUCTION SHOTS





# STEEL STRUCTURES COMPANY IN ROMANIA

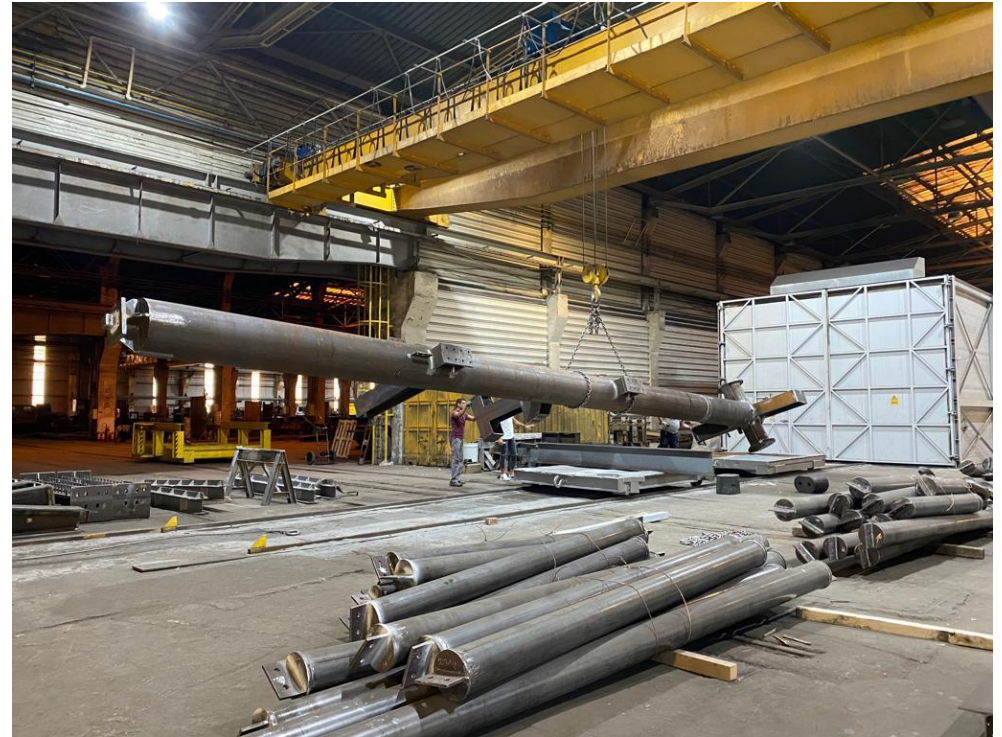
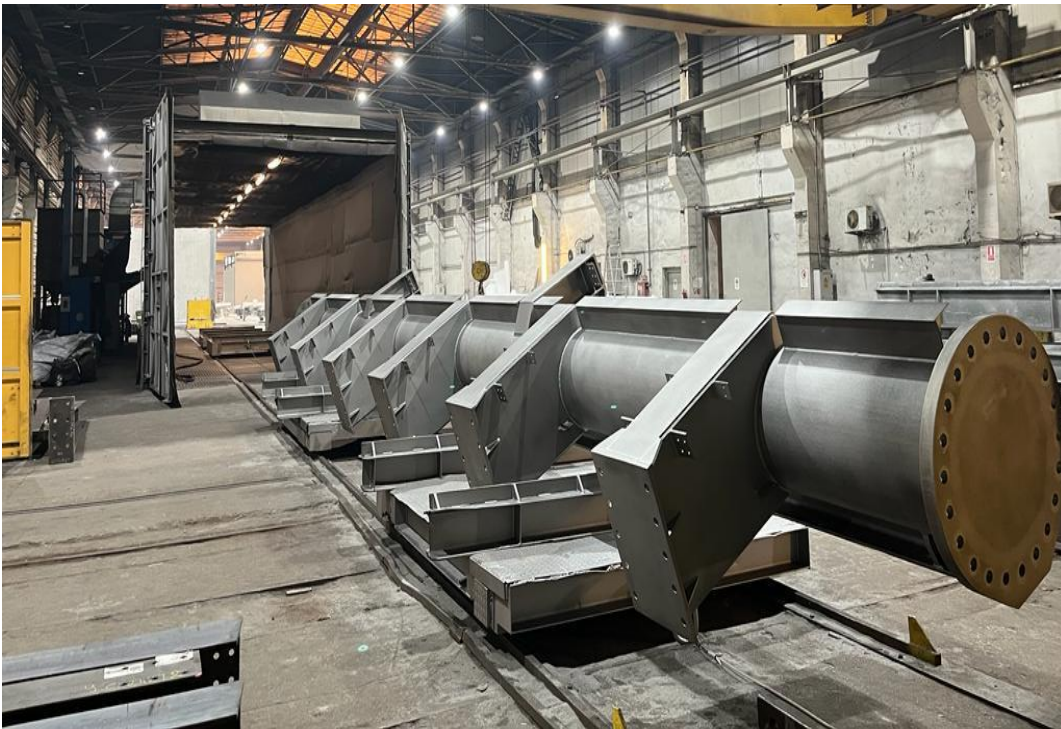
## PRODUCTION SHOTS





# STEEL STRUCTURES COMPANY IN ROMANIA

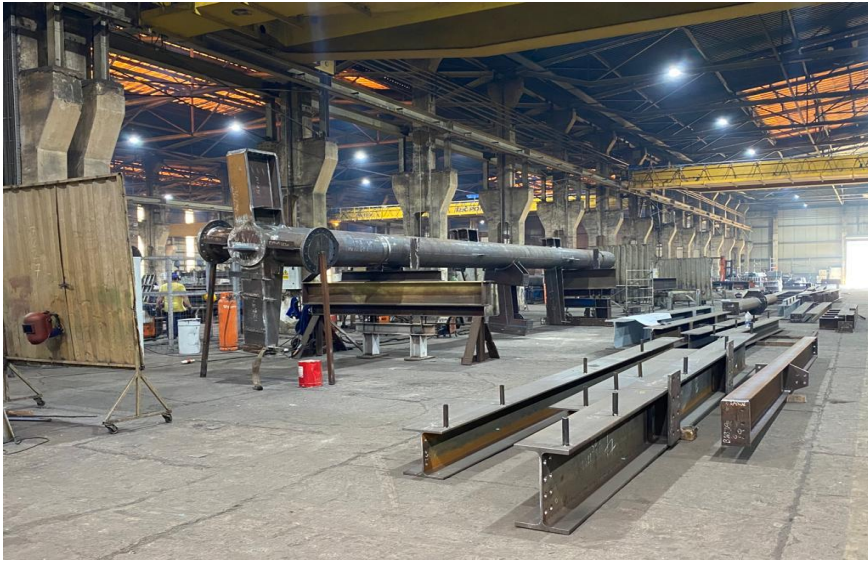
## PRODUCTION SHOTS





# STEEL STRUCTURES COMPANY IN ROMANIA

## PRODUCTION SHOTS





# STEEL STRUCTURES COMPANY IN ROMANIA

## PRODUCTION SHOTS



